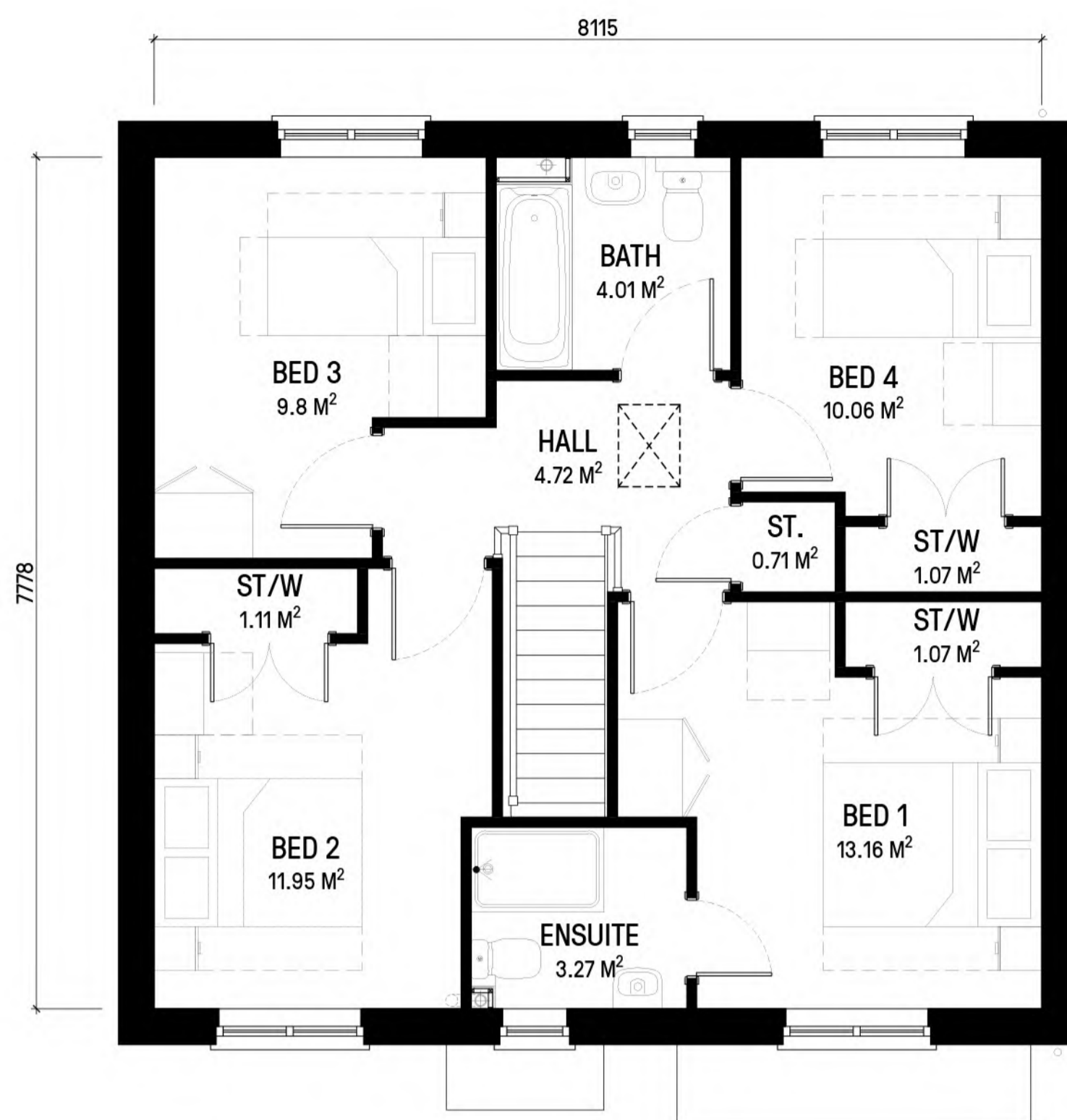


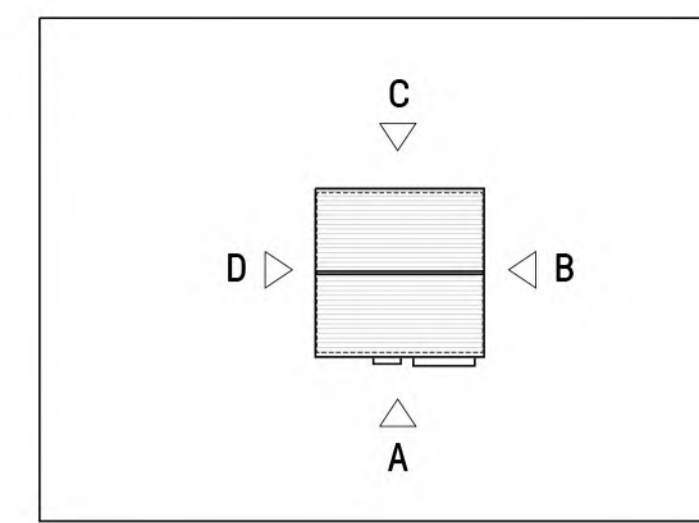
1 GROUND FLOOR  
1:50  
Applicable for plot 48 only



2 FIRST FLOOR  
1:50



3 ROOF PLAN  
1:50



- MATERIAL KEY:**
1. Buff multi blended brick
  2. Projecting brick details
  3. UPVC windows + doors
  4. SBD Front door
  5. Grey roof tile with wet verge
  6. Grey GRP canopy
  7. Grey GRP canopy with posts
  8. Stone effect band surround detail
  9. Stone effect band detail - window sill
  10. Half soldier course - window sill
  11. Two stretcher courses projecting brick
  12. Soldier course - window header
  13. UPVC Rainwater goods
  14. Grey UPVC eaves + soffit
  15. Garage Door
  16. Grey Dormer
  17. Roof light
  18. Balcony posts
  19. Projecting Bay

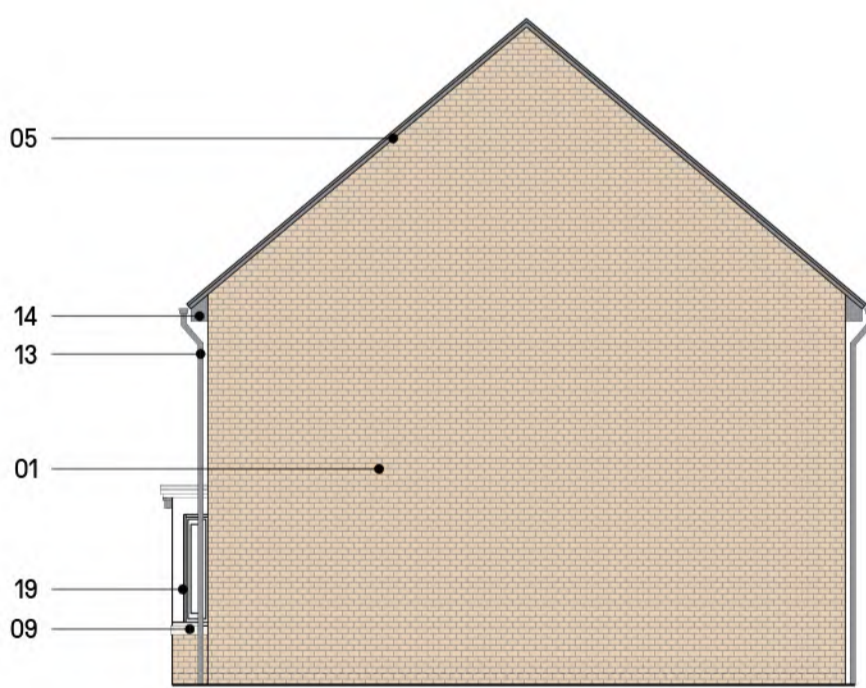
**MATERIAL NOTE:**

Please refer to the following drawings:  
- D-100's Roof & Wall Finishes;  
for material finishes for all dwellings.

**4B6P**  
GROSS AREA: 128.68 M<sup>2</sup> (1385 SQFT)  
NET AREA: 127.07 M<sup>2</sup> (1368 SQFT)



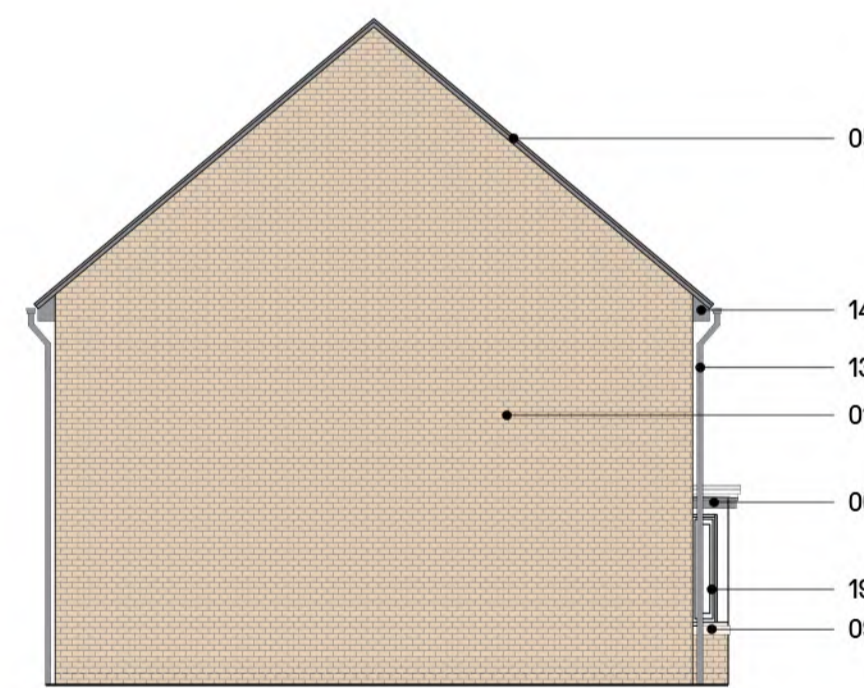
4 FRONT ELEVATION - A  
1:100  
Applicable for plot 48 only



5 SIDE ELEVATION - B  
1:100



6 REAR ELEVATION - C  
1:100



7 SIDE ELEVATION - D  
1:100



8 KEY PLAN  
Not to Scale

<p><b>Notes</b></p> <p>Copyright in this drawing remains the property of BM3 Architecture Limited. Contractors and consultants are to advise BM3 Architecture Limited of any discrepancies.</p>	<p><b>Revision</b></p> <p>A - Material key amended to show stone effect surround. B - Front facade openings increased in height. Material key amended (2). Study room's furniture position amended. C - Key plan amended to show mirrored plots and houses east of the site.</p>	<p>Date</p> <p>20.07.22 10.10.22 04.11.22</p>	<p>By</p> <p>MT RR RR</p>	<p>Chkd</p> <p>JB JB JB</p>	<p>CDM Notes</p> <p>0m 1m 2m 3m 4m 5m 1:50 Scale Bar</p> <p>0m 2m 4m 6m 8m 10m 1:100 Scale Bar</p>	<p>Project</p> <p>CAMPFIELD ROAD SHOEBURYNNESS SOUTHEND-ON-SEA</p>	<p>Drawing</p> <p>HOUSE TYPE / NA-44 PRIVATE PLANS &amp; ELEVATIONS</p>	<p>Client</p> <p><b>Taylor Wimpey</b></p>	<p>Scale</p> <p>Various@A1</p>	<p>Dated</p> <p>JUNE-2022</p>	<p>Job No.</p> <p>71407</p>	<p>Drawing No.</p> <p>D-212</p>	<p>Drawn by</p> <p>MT</p>	<p>Checked</p> <p>JB</p>	<p>CSfB Element</p> <p>PLANNING</p>	<p>Revision</p> <p>C</p>	